

# Specifications

## LEO 30T



### PERFORMANCE

Working height, max.	30,00 m
Horizontal outreach with 80 kg	15,70 m
Horizontal outreach with 200 kg	14,00 m
Basket capacity	200 kg
Movable jib	180°
Basket rotation	180°
Turret rotation	450°
To be jacked up on ground slope of	16,7°/30,0 %
Height and width track adjustment	22/17 cm
Gradeability, max.	16,7°/30,0 %
Slope angle	16,7°/30,0 %
Travel speed	3,0 km/h

### MEASUREMENTS

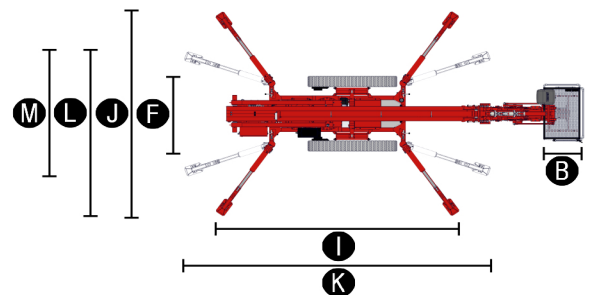
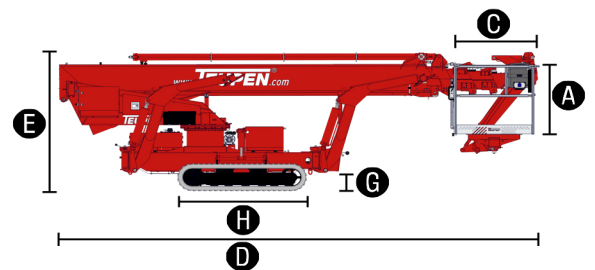
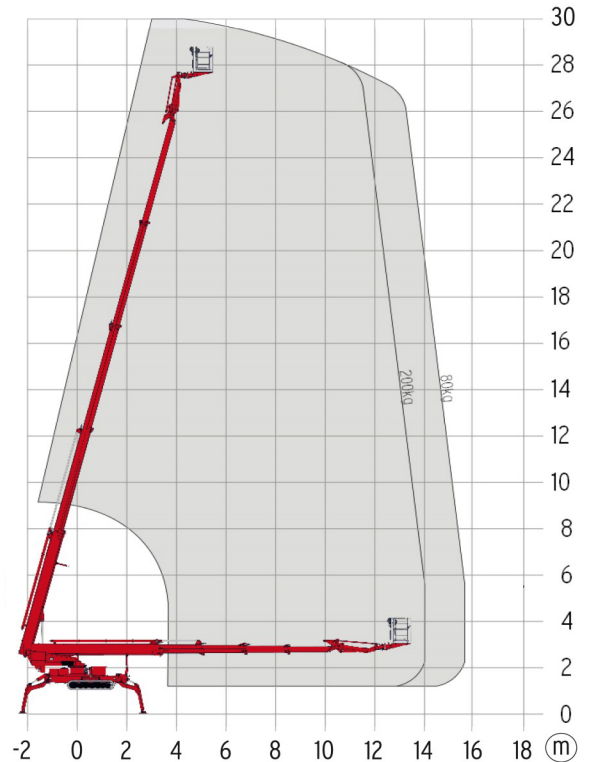
Platform height (A)	1,10 m
Platform length (B)	1,20 m
Platform width (C)	0,80 m
Length, overall (D)	7,20 m
Length without basket (E)	1,98 m
Height, travel position (F)	1,58 m
Width, minimal overall width (G)	0,27 m
Ground clearance, max. (H)	1,92 m x 0,25 m
Length outrigger footprint standard (I)	5,30 m
Width outrigger footprint standard (J)	4,75 m
Length footprint one side narrow (K)	6,64 m
Width footprint one side narrow (L)	3,95 m
Width footprint both sides narrow (M)	2,99 m
Outrigger plate (L x W)	0,31 m x 0,22 m

### WEIGHT

Total weight	4300 kg
Live load in travelling position	3,7 kN/m <sup>2</sup>
Live load in working position	2,0 kN/m <sup>2</sup>
Point load per outrigger plate, max.	26,0 kN

### POWER

Standard power sources (electric and combustion engine)	<b>1) Electric:</b> 230 V, 12,9 A, 2,2 kW <b>2) Diesel:</b> Kubota D 902-E3 (16,1 kW/21,6 hp)
Optional power source	
Fuel tank capacity Diesel engine	40,0 l



### STANDARDS COMPLIANCE

2006/42/EC-Machinery directive  
(Harmonised standard EN280:2001 + A2:2009); 2004/108/EC (EMC);  
2000/14/EC (Noise emission directive – outdoor)